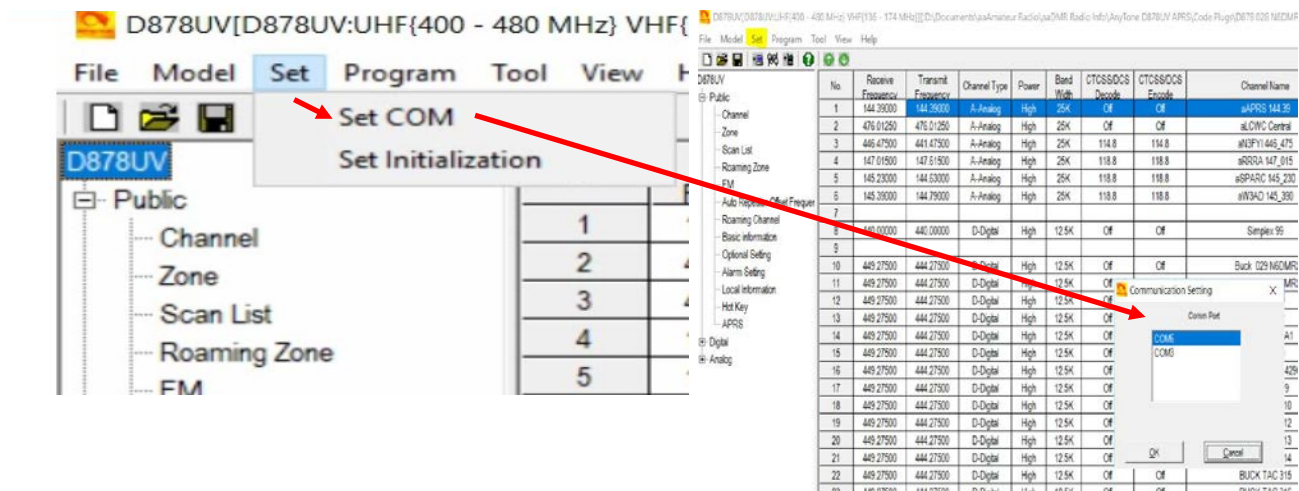


D168UV Firmware Update

Important Notice: Please make sure the codeplug is saved to PC before you Complete the MCU update and reset.

1. Before the firmware upgrade, use the current CPS (CPS version= Firmware version in device info.) to read the radio first and save the codeplug in .rdt file.
2. Install new CPS, in CPS ->Set -> Set Com, choose the correct Com port

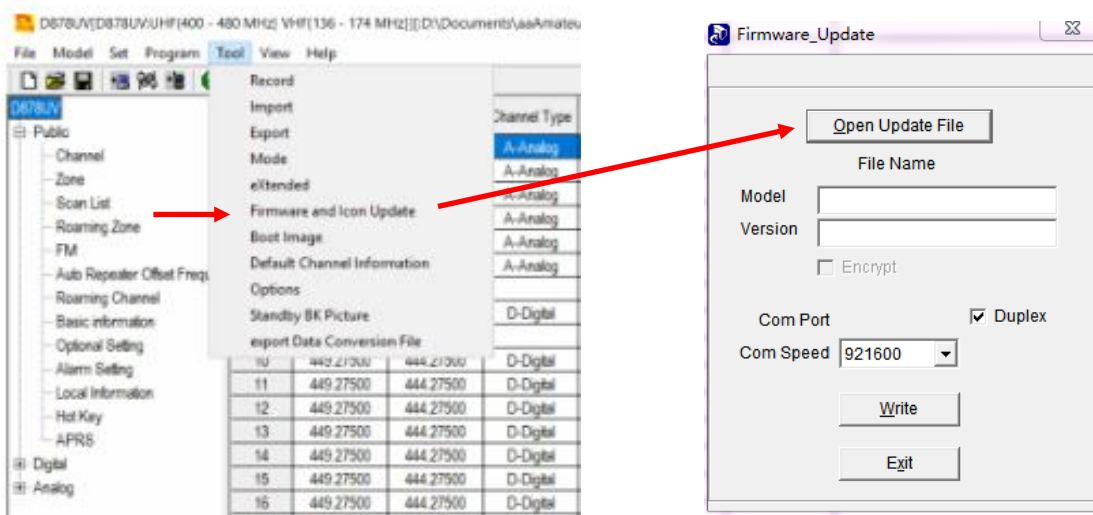


3. Use the USB C cable to connect PC and radio

4. Please always Turn OFF the APRS in the radio menu before any update to prevent the radio from going into TX when connected to PC, **as it may cause the CPU or memory IC damage.**

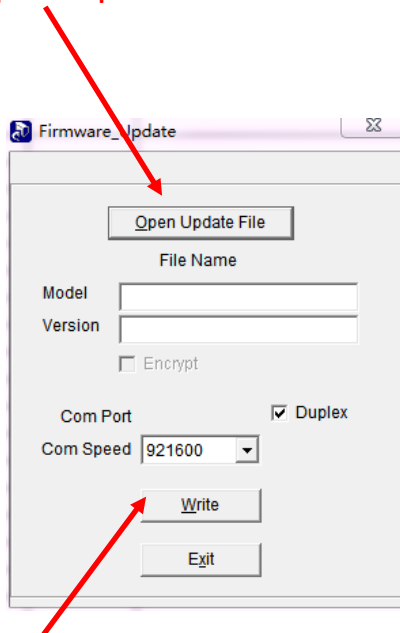
5. Hold pressing down the PF1 key and PF2 key (two keys below PTT) at the same time, power on radio, the red LED will begin blinking.

6. In CPS ->Tool -> Firmware and Icon Update, choose “Open Update File” and select the FW or Icon SPI file you want to update to:



D168UV Firmware Update

7. Click **Open Update File** and choose appropriate SPI file:



a.) For FW Update use the SPI file from the FW Update Folder

Note: For Icon Update please see separate Icon Update Instructions

7. Click **Write** to update the radio to the latest firmware. After the Firmware update, the radio should return to normal display on screen.

8. Reboot the radio MCU(radio reset) as described below when the FW update is finished

After updating the firmware, you need to reset to the radio Main Control Unit (MCU) as follows:

a.) Power off the radio first.

b.) Then while holding down the PTT and the PF1 button down at the same time, Power the radio ON

*** Please Wait – and do not turn the radio off while it restarts ***

c.) The radio will start up and the display will show :

Are you sure
you want to
Initialize the radio?
Confirm Exit

*** Select the Green menu key to confirm the MCU Reboot / Initialization ***

d.) After the MCU reboot is confirmed, you will have to set the time zone, date and time and information as follows:

D168UV Firmware Update

- Use the PF1 key to scroll or navigate through the GMT date / time fields
- Note the active field for data set will be shown in **Red** text
- Up and Down arrow keys will allow you to change the information in the fields
- AFTER you have all the correct information entered, use the Green menu key to confirm the settings and the radio will restart.



9. After the firmware upgrade, check the device info in radio menu, the new firmware version shall be equal to the new CPS version.

Use the new CPS to open the .rdt file saved in 1st step, check the optional settings (because new CPS has more functions, the memory location is different from the old CPS, the optional settings maybe incorrect).

Once the new codeplug is completed, write it to the radio.