

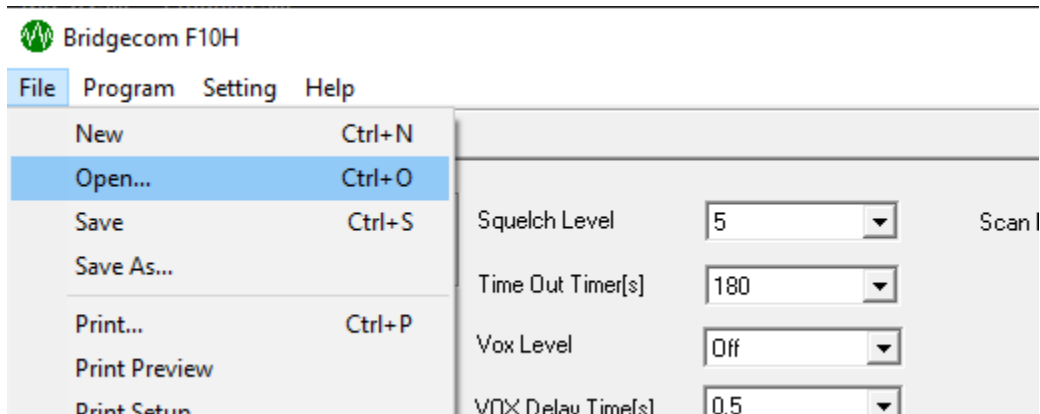
BridgeCom Buddy Amateur Conversion Guide

These simple steps will take you through the process of converting your BridgeCom Buddy radio from an FRS radio into an Amateur radio.* To convert the radio back into an FRS radio, or to open a BridgeCom Buddy FRS code plug, follow the steps outlined in the **BridgeCom Buddy FRS Conversion Guide**

***Operator assumes full responsibility for complying with FCC rules and regulations. Operator must have a valid FCC amateur radio license to use the Buddy in the amateur frequency range.**

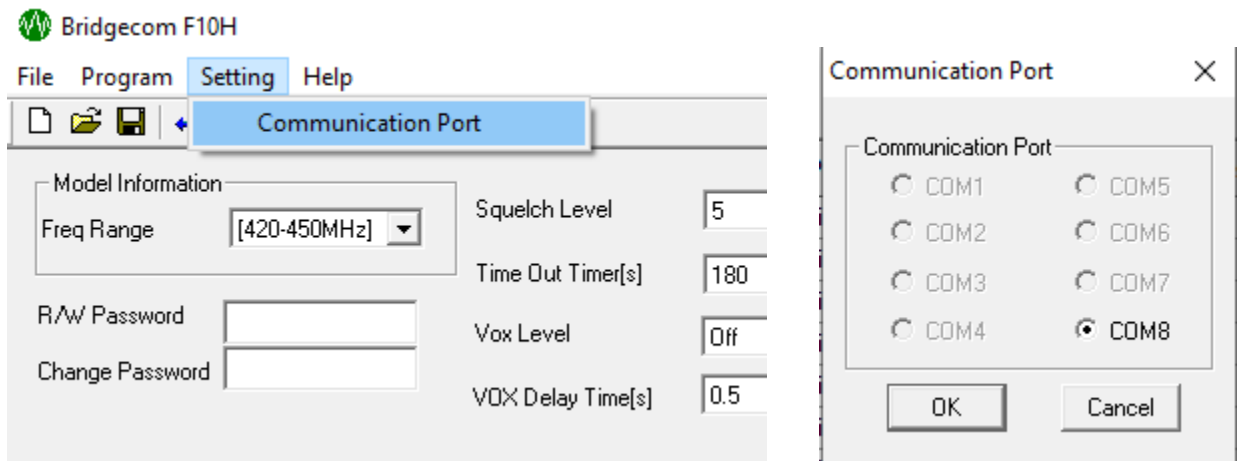
1. Download the required files
 - a. BridgeCom Buddy Amateur CPS:
[https://21328144.fs1.hubspotusercontent-na1.net/hubfs/21328144/Tech%20\(General%20Files\)/BuddyHAM_cps.zip](https://21328144.fs1.hubspotusercontent-na1.net/hubfs/21328144/Tech%20(General%20Files)/BuddyHAM_cps.zip)
 - b. BridgeCom Buddy Amateur factory code plug:
[https://21328144.fs1.hubspotusercontent-na1.net/hubfs/21328144/Tech%20\(General%20Files\)/HAM-factory.dig](https://21328144.fs1.hubspotusercontent-na1.net/hubfs/21328144/Tech%20(General%20Files)/HAM-factory.dig)
2. Extract the BridgeCom Buddy Amateur CPS zip file and open **Bridgecom F10H.exe** - This will open the CPS.

3. From the CPS navigate to **File->Open...**



4. From the dialog box that appears, open the downloaded BridgeCom Buddy Amateur factory code plug (**HAM-factory.dig**).

5. Navigate to **Setting->Communication Port** and choose the correct COM port. You may have to find this using the Device Manager.



6. Next, edit the radio and channel settings to your liking and save the file using **File->Save as...** Name the file something significant that you will remember, and then write to radio using **Program->Write to Radio**. If the COM port is selected properly, this will write the code plug to your radio.

