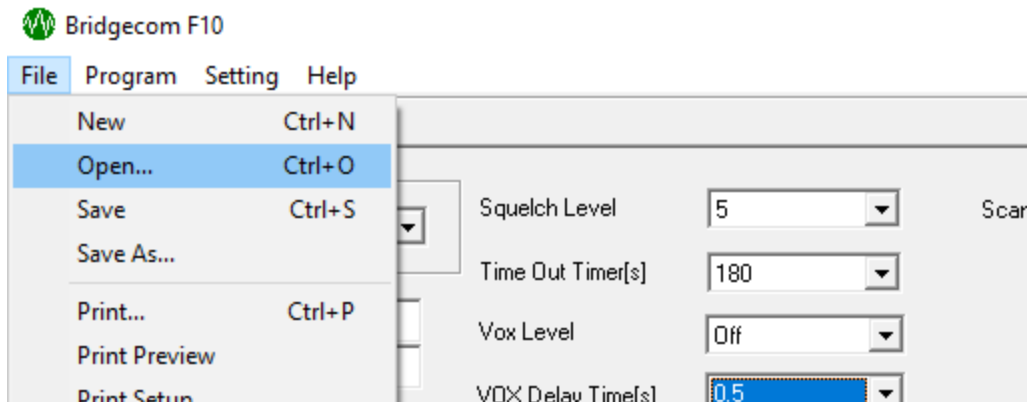


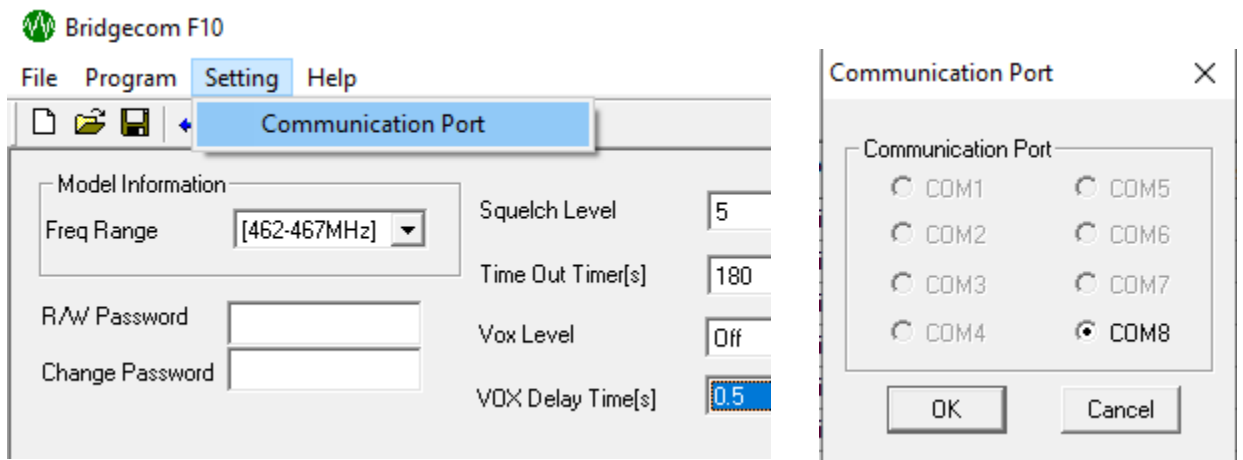
# BridgeCom Buddy FRS Conversion Guide

These simple steps will take you through the process of converting your BridgeCom Buddy radio back to an FRS radio. To convert the radio back into an amateur radio, or to open a BridgeCom Buddy amateur code plug, follow the steps outlined in the **BridgeCom Buddy Amateur Conversion Guide**

1. Download the required files
  - a. BridgeCom Buddy FRS CPS:  
[https://21328144.fs1.hubspotusercontent-na1.net/hubfs/21328144/Tech%20\(General%20Files\)/BridgeCom\\_Buddy\\_CPS\\_V1.42.zip](https://21328144.fs1.hubspotusercontent-na1.net/hubfs/21328144/Tech%20(General%20Files)/BridgeCom_Buddy_CPS_V1.42.zip)
  - b. BridgeCom Buddy FRS factory code plug:  
[https://21328144.fs1.hubspotusercontent-na1.net/hubfs/21328144/Tech%20\(General%20Files\)/FRS-factory.dig](https://21328144.fs1.hubspotusercontent-na1.net/hubfs/21328144/Tech%20(General%20Files)/FRS-factory.dig)
  
2. Extract the BridgeCom Buddy FRS CPS zip file and open **Bridgecom F10 Setup v1.42.exe** - This will open the installation wizard to install the CPS on your computer. Once the wizard completes, you should have an icon on your desktop named **Bridgecom F10**. Double-click this to open the CPS.
  
3. From the CPS navigate to **File->Open...**



4. From the dialog box that appears, open the downloaded BridgeCom Buddy FRS factory code plug (**FRS-factory.dig**).
5. Navigate to **Setting->Communication Port** and choose the correct COM port. You may have to find this using the Device Manager.



6. Next, edit the radio and channel settings to your liking and save the file using **File->Save as...** Name the file something significant that you will remember, and then write to radio using **Program->Write to Radio**. If the COM port is selected properly, this will write the code plug to your radio.

